

SOLO FEEDER™

SOLO BALL FEEDER FOR BASEBALL AND SOFTBALL



SOLO BALL FEEDER
PATENTS APPLIED FOR

INSTRUCTION MANUAL

OPERATION · SETUP · USE & CARE · SERVICE



SPORTS ATTACK LLC. | 800.717.4251 | www.sportsattack.com

REV07272020

SOLO FEEDER

WARRANTY STATEMENT

Solo Ball Feeders manufactured by Sports Attack LLC. are warranted against defects in materials and workmanship for a period of five (5) years from the date of original purchase, with the exception of motors, which are warranted for one (1) year.

Should such equipment be found to be defective, Sports Attack LLC. will, at its option and sole discretion provide at no cost to the purchaser new or rebuilt replacements for defective parts and will pay the pre-approved labor charge to repair the product for the duration of the warranty period only.

THE FOREGOING OBLIGATION IS EXPRESSLY GIVEN IN LIEU OF ANY OTHER WARRANTIES, EXPRESSED OR IMPLIED, INCLUDING ANY IMPLIED WARRANTY OF MERCHANTABILITY OR FITNESS FOR A PARTICULAR PURPOSE, WHICH ARE HEREBY EXCLUDED. SPORTS ATTACK LLC. SHALL NOT BE LIABLE FOR INDIRECT, INCIDENTAL OR CONSEQUENTIAL DAMAGES OR LOSSES FROM ANY CAUSE WHATSOEVER.

This warranty is void if the equipment has been misused, misapplied, improperly assembled, or modified without the express written permission of Sports Attack LLC. In addition, this warranty does not apply to damage in transit, in any accident unrelated to the direct operation of the equipment, or by fire, flood or act of God.

To obtain warranty service during the warranty period:

1. Have the date of purchase and serial number ready (see page 4 for the location of the serial number).
2. Call the Customer Service Department at 800.717.4251
3. Identify the product and describe the problem.

A Customer Service Representative will help you to correct the problem and send replacement part(s) if necessary. An invoice will be sent if any parts need to be exchanged. To clear the invoice, return, prepaid and within 30 days, the defective parts as detailed on the invoice to:

Sports Attack LLC.
2805 U. S. 40
Verdi, NV 89439

SHIPPING DAMAGE CLAIMS PROCEDURE

NOTE: For your protection, please note that equipment in this shipment was carefully inspected and packaged by skilled personnel before leaving the factory.

Upon acceptance of this shipment, the transportation company assumes full responsibility for its safe delivery.

IF SHIPMENT ARRIVES DAMAGED:

1. **VISIBLE LOSS OR DAMAGE:** Be certain that any visible loss or damage is noted on the freight bill or express receipt, and that the note of loss or damage is signed by the delivery person.
2. **FILE CLAIM FOR DAMAGE IMMEDIATELY:** Regardless of the extent of the damage.
3. **CONCEALED LOSS OR DAMAGE:** If damage is unnoticed until the merchandise is unpacked, notify the transportation company or carrier immediately, and file "CONCEALED DAMAGE" claim with them. This must be done within fifteen (15) days from the date the delivery was made to you. Be sure to retain the container for inspection.

Sports Attack LLC. cannot assume liability for damage or loss incurred in transit. We will, however, at your request, supply you with the necessary documents to support your claim.

To register the Warranty, please return the Warranty Registration Card to:

Sports Attack LLC.
P.O. Box 1529
Verdi, NV 89439

For repairs and service after the Warranty period, please call:

Sports Attack
Customer Service Dept.
Ph 800.717.4251
Fx (775) 345.2883

RETURNS

To return an item, please contact our Customer Service Department at 800.717.4251.

A 15% restocking fee will be charged for any items accepted for return. It is the customer's responsibility to handle the repacking and shipment (as well as all associated fees) back to Sports Attack.

No returns will be accepted after 30 days of receiving this product.

TABLE OF CONTENTS

Warranty Statement i

Safety Instructions 2

SOLO FEEDER OPERATION

 Component View & Packing List 3

 Assembly for Baseball 4

 Assembly for Softball 5

 Operation 6-7

PARTS

 Parts List 8

 Exploded View 9

INTRODUCTION

Thank you for purchasing this Sports Attack LLC. equipment.

Proper assembly, careful operation and consistent maintenance of this equipment will ensure that it gives you the very best performance and a long, economical service life.

This manual contains the information needed to properly set up the Solo Feeder, and to use, care for and maintain the Solo Feeder in a manner which will ensure its optimum performance.

If you have any questions regarding operation, maintenance or service, please call our Customer Service Department at 800-717-4251 or 775-345-2882.

RECEIVING THE PRODUCT

Please check the contents of your boxes to ensure you have received all parts for the feeder.

If anything is missing or damaged, call Sports Attack Customer Service at 800-717-4251. If the product or package has been damaged in shipping, note on shipping tag, save all evidence of damage along with related documents and contact the shipper immediately.

SAFETY INSTRUCTIONS

ELECTRICAL SAFETY

Use a 115 volt single phase 3-wire (2 wire with ground) grounded power source.

Up to 200 ft. from power source, use a minimum #14/3 grounded 3-wire 15 amp minimum rating extension cord.

Over 200 ft. from power source, consult a licensed electrician for required power cord size.

OPERATING SAFETY

CAUTION: Carefully check Solo Feeder for completeness and condition before connecting to electrical power.

Use protective screen in front of the pitching machine. Test pitches before allowing a hitter to enter the batter's box.

WARNING

PERSONAL INJURY HAZARD

Carefully read all instructions in this manual, and all labels and warnings on the Solo Feeder before using this machine.

Use machine only under adult supervision. Failure to operate Solo Feeder as described in this manual can result in severe personal injury or death.

ELECTRICAL SHOCK HAZARD

Solo Feeder must be connected to a properly grounded electrical receptacle.

- Do not operate on wet ground.

- This equipment is intended for noncommercial use only.

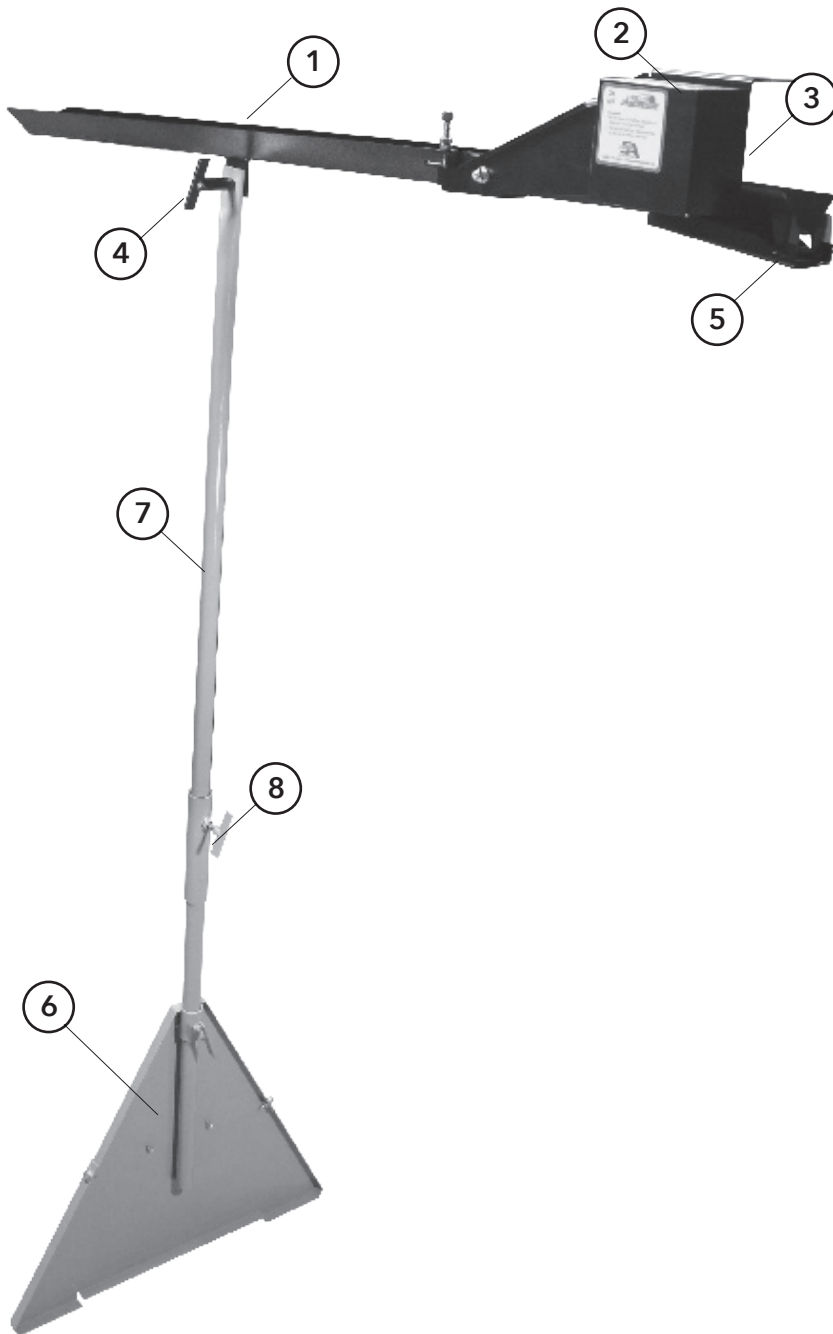
CAUTION

PERSONAL INJURY HAZARD

Keep hands away from throwing wheels anytime the machine is connected to a power source.

- DO NOT plug in or energize Solo Feeder until all Assembly Instructions and Operation Instructions are read and followed.

COMPONENT VIEW



PACKING LIST

STANDARD (with all feeders)

1. Ball Chute
2. Motor
3. Motor Roller
4. Handle
5. Hack Attack Attachment
6. Stand Top and Bottom

SOFTBALL SOLO FEEDERS

7. Softball Leg

BASEBALL SOLO FEEDERS

7. Softball Leg
8. Baseball Leg Extension

ASSEMBLY FOR BASEBALL HACK ATTACK AND JUNIOR HACK ATTACK

STEP ONE:

Attach Softball leg onto ball chute as Show at "A" Fig. 1.

STEP TWO:

For a Solo Feeder that is going to be used with a BASEBALL Hack Attack, Junior Hack Attack or Track Attack, attach baseball extension leg (show at "B" Fig. 1).

STEP THREE:

Attach to stand as show at "C" Fig. 1.

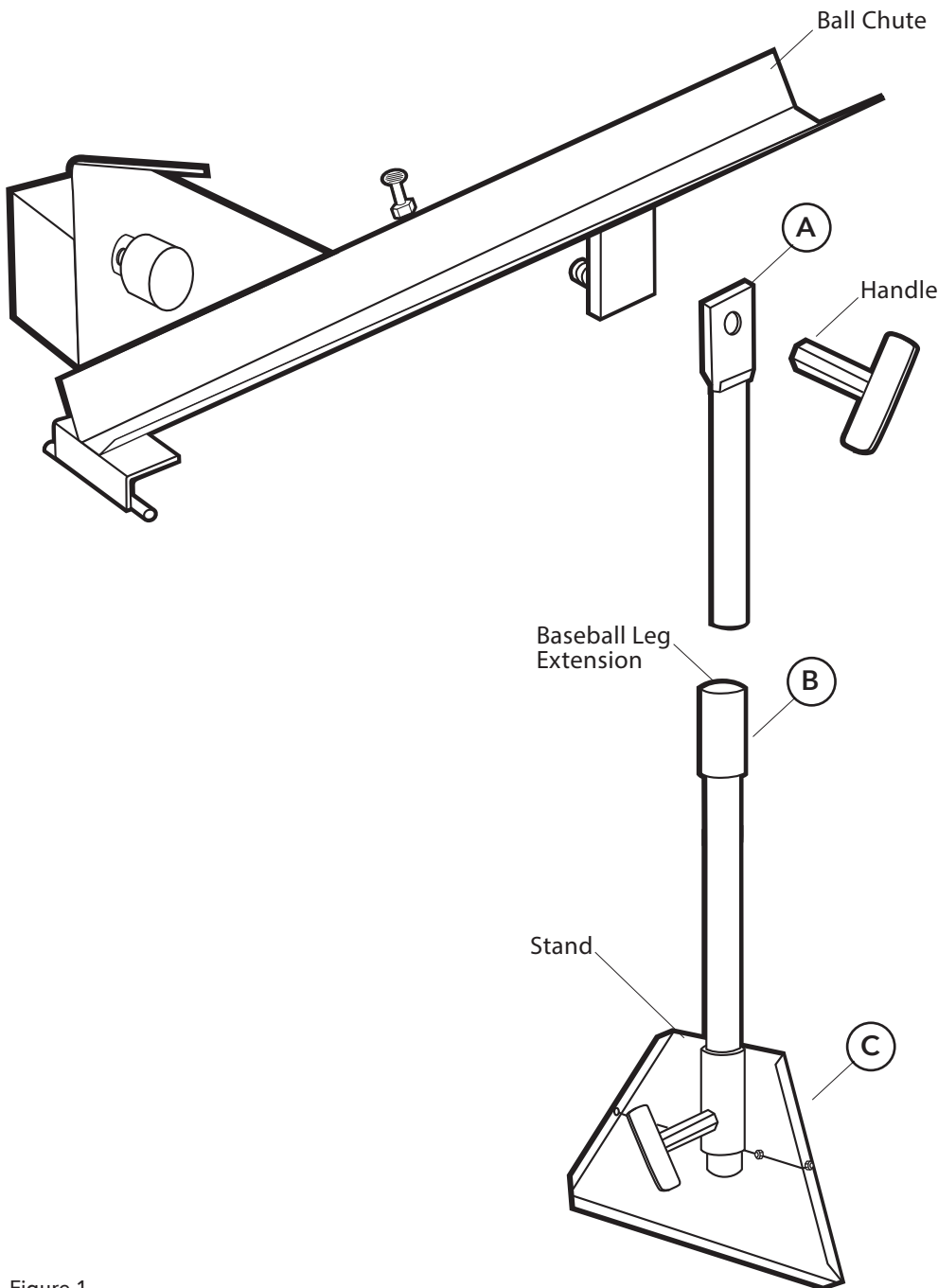


Figure 1

NOTE: The Solo Feeder interval control also comes assembled for use with the Track Attack Eye Ball (smaller ball) Pitching Machine. See page 7 for interval adjustment.

ASSEMBLY FOR SOFTBALL HACK ATTACK AND JUNIOR HACK ATTACK

STEP ONE:

Attach Softball leg onto ball chute as Show at "A" Fig. 2.

STEP TWO:

For a Solo Feeder that is going to be used with a SOFTBALL Hack Attack, Junior or Track Attack machine, attach stand as show at "C" Fig. 2 .

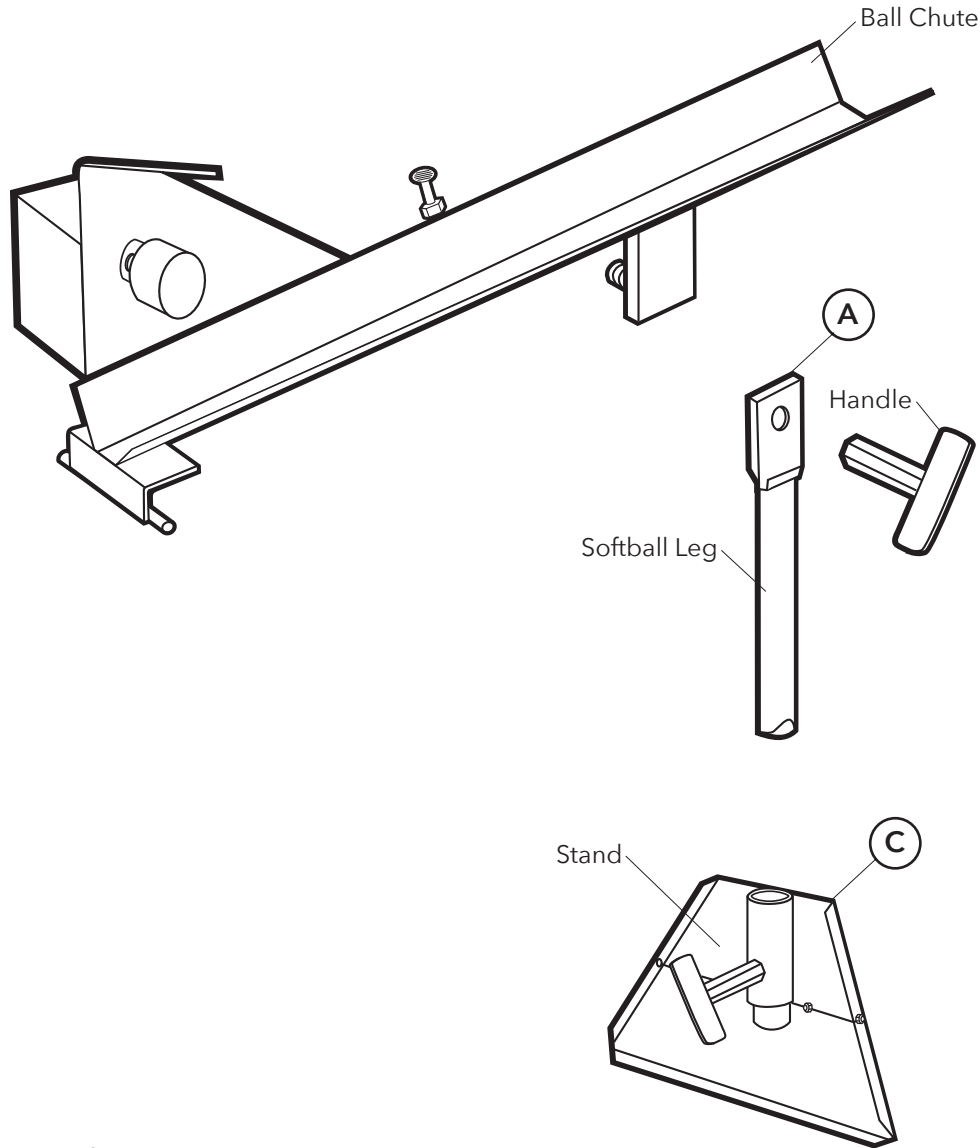


Figure 2

NOTE: The Solo Feeder interval control also comes assembled for use with the Track Attack Eye Ball (smaller ball) Pitching Machine. See page 7 for interval adjustment.

FOR USE WITH HACK ATTACK & JUNIOR HACK ATTACK BASEBALL OR SOFTBALL

1. Assemble feed attachment piece to Hack Attack ball chute handle as shown.

Figure 3

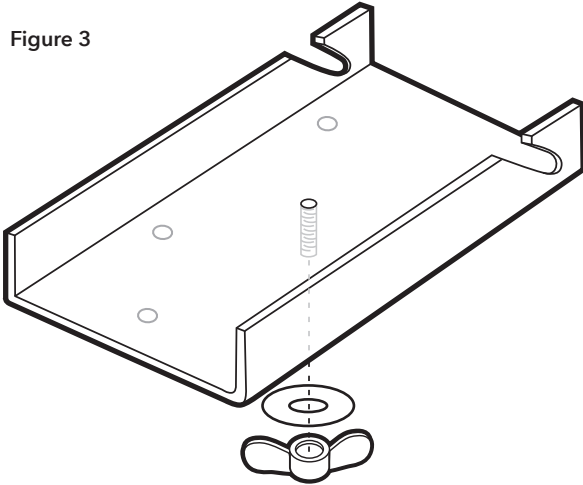
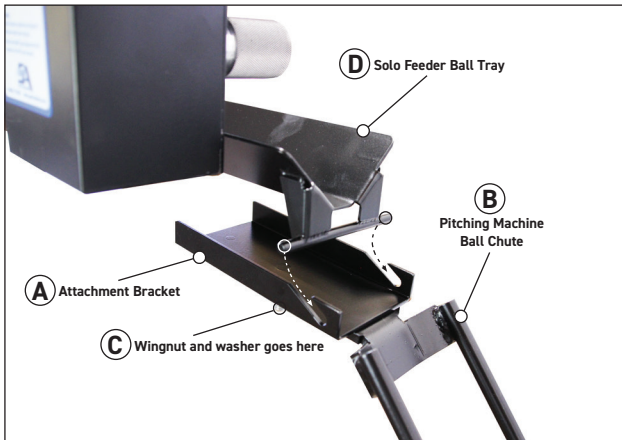


Figure 4



1. Install Attachment Bracket (A) to Ball Chute (B) using wingnut and washer provided (C).

2. Slide Solo Feeder Ball Tray (D) into grooves on Attachment Bracket (A) as shown with arrows. The weight of the feeder will keep it locked in place.

FOR USE WITH THE I-HACK ATTACK BASEBALL OR SOFTBALL

1. Remove existing handle/ball chute on I-Hack before installing Solo Feeder ball chute. See Fig. 6-7.



Figure 5 Existing Ball Chute



Figure 6 I-Hack with Solo Feeder Ball Chute.

OPERATION

ADJUSTMENT FOR TIME BETWEEN PITCHES

To shorten the interval between pitches, loosen jam nut at "A" Fig. 7. Turn the adjustment bolt "B" Fig. 8, clockwise. After adjustment, tighten jam nut "A."

To lengthen the interval between pitches, loosen jam nut "A" Fig. 7. Turn the adjustment bolts "B" counterclockwise. After adjustment, tighten jam nut "A."

NOTE: The raising and lowering of the roller, as shown at "C," will change the feeding interval.

NOTE: Notice how changing the space at "C" Fig. 7 will change the distance that the roller must turn to release the ball. This changes the time between pitches.

ON/OFF SWITCH

1. This switch starts and stops the feeder.
2. Have pitching machine turned on first with wheels turning fast enough so that first test ball from feeder does not jam.

GENERAL OPERATION

1. Do not mix different types of balls.
2. The location of the roller controls the interval (or time between pitches) at which the ball is pitched.

POSITION 1 - Allows the ball to pitch faster

POSITION 2 - Allows the ball to pitch slower

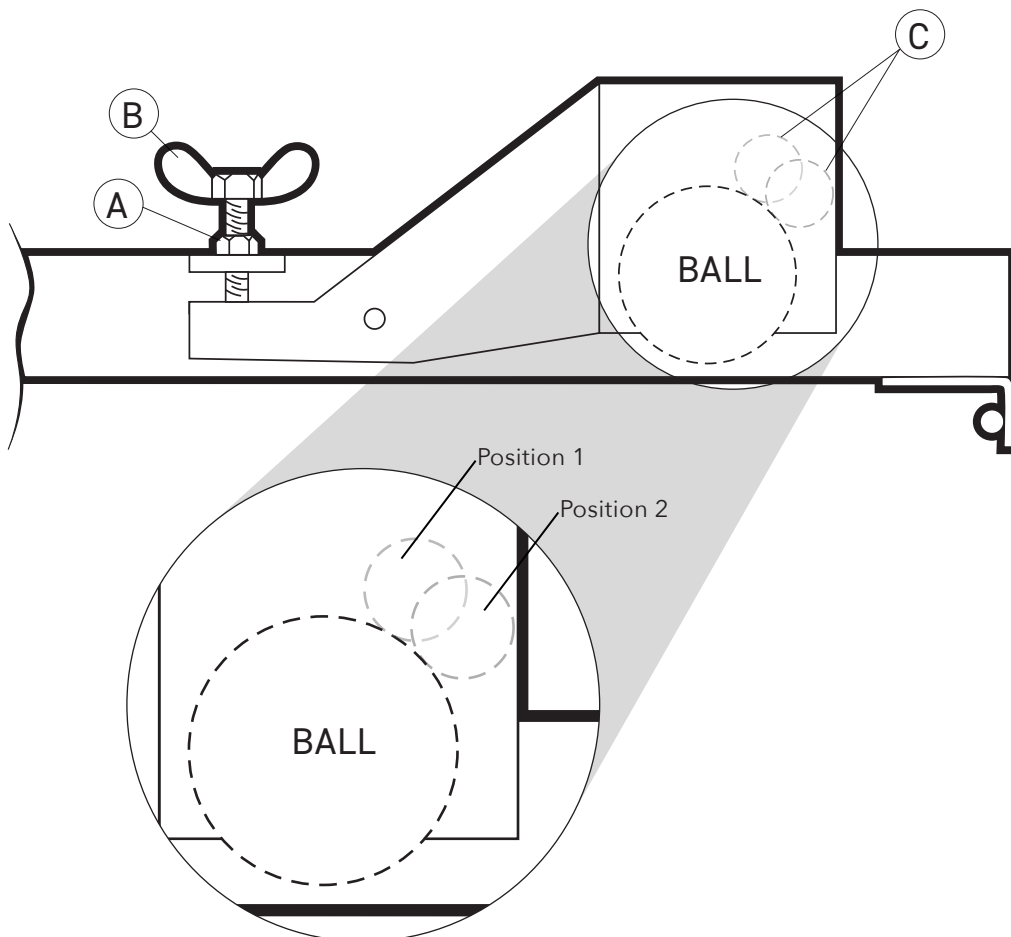


Figure 7

WARNING PERSONAL INJURY HAZARD

Feeder should be used under adult supervision only! The on/off switch is located out of the reach of children.

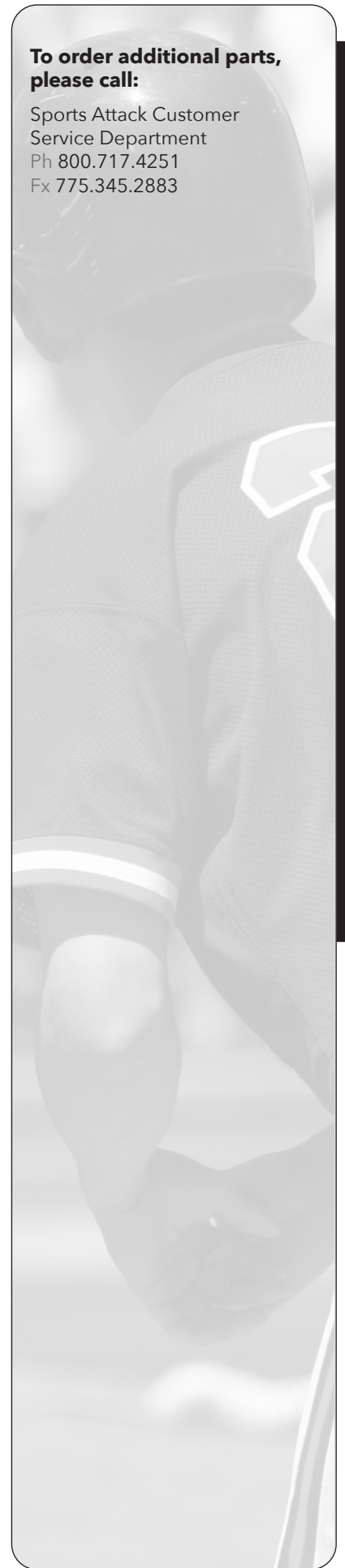
SOLO FEEDER PARTS LIST

PART NO.	DESCRIPTION	QTY
533-7017	Stand Top	1
533-7018	Stand Bottom	1
533-1194	Handle for Chute	1
533-1193	Handle for Stand	1
533-1205	Baseball Extension Leg	1
533-1204	Softball Leg	1
533-1199	Chute	1
533-1197	Motor Bracket	1
310-8019	Roller	1
533-1198	Motor Cover	1
530-1022	110V Motor	1
530-1021	240V Motor	1
232-0000	Cord	1
223-0002	Switxh	1
533-3017	Hack Attack Attachment	1
533-1107	I-Hack Softball Attachment	1
533-1106	I-Hack Baseball Attachment	1
533-1538	Blast Attachment	1

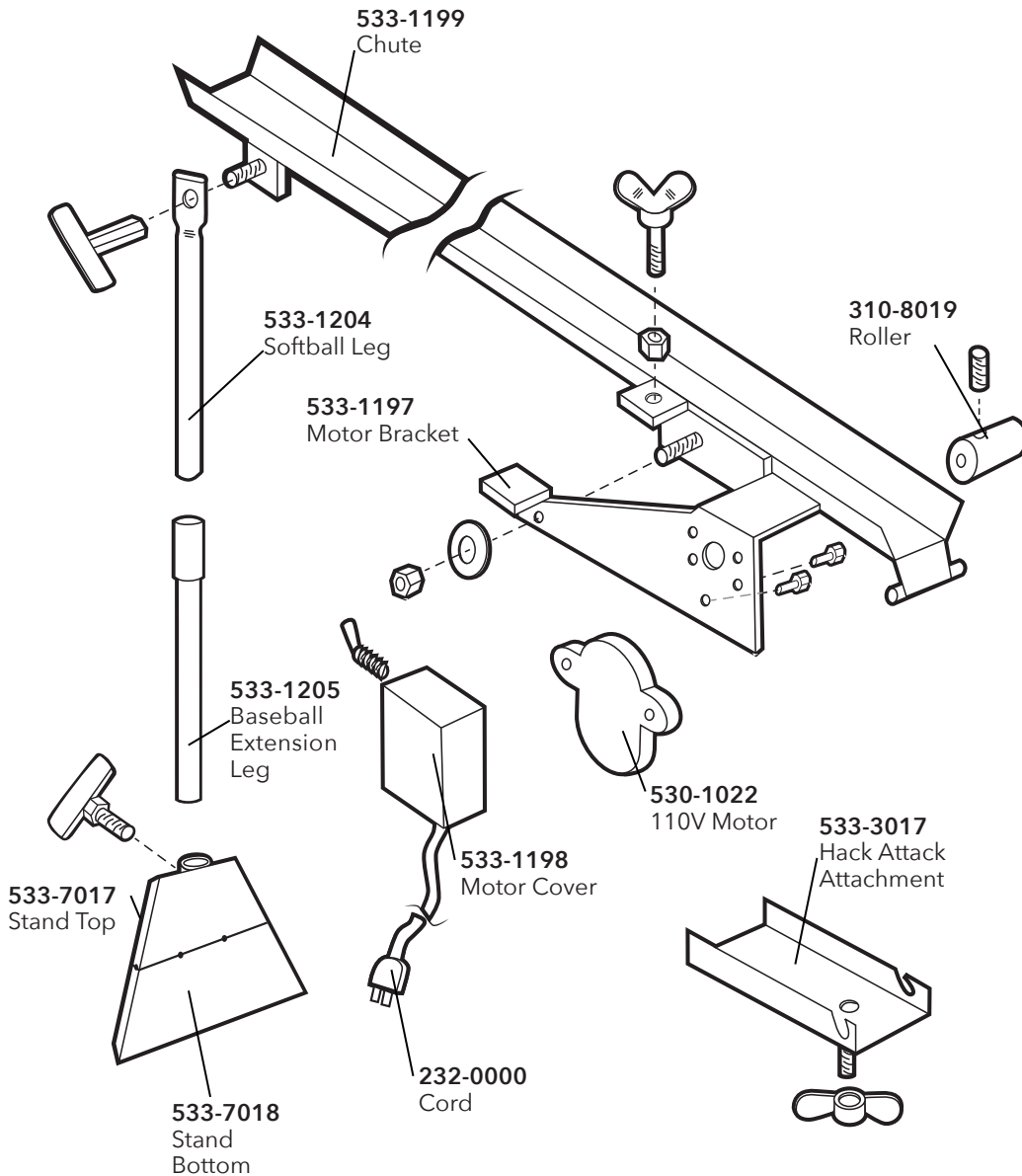
**To order additional parts,
please call:**

Sports Attack Customer
Service Department
Ph 800.717.4251
Fx 775.345.2883

Solo Feeder Parts List



EXPLODED VIEW



**To order additional parts,
please call:**

Sports Attack Customer
Service Department
Ph 800-717-4251
Fx 775-345-2883

Solo Feeder Exploded View